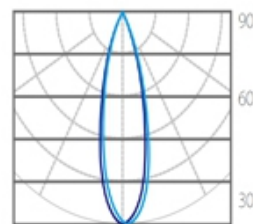
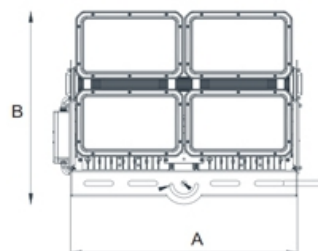
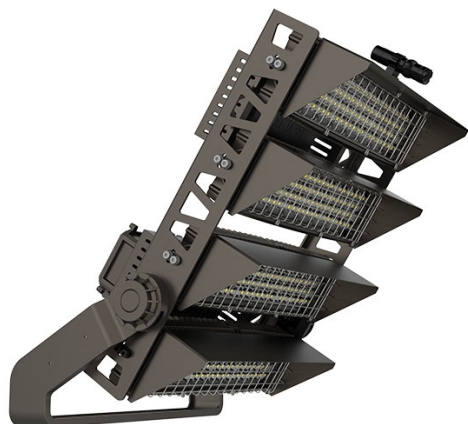


LED Flood Light, IP66



Find me on the Web



Lighting Data

LED Chip	Lumileds
Lumens	42,000lm / 84,000lm / 126,000lm
Color Rendering Index	>80
Correlated Color Temp.	3000K / 4000K / 6000K
Beam Angle	15°

Electrical Data

Power	300W / 600W / 900W / 1200W
Voltage	220-240VAC
Frequency	50/60Hz
Power Factor	>0.9

Mechanical Data

Housing	Diecast Aluminium
Diffuser	Glass
IP Rating	IP66
Finish	Black

Driver Options

On-Off / 0-10V / Triac / Dali / D4i

Emergency Kit

Not Applicable

Sensors

PIR / Microwave

Article ID	Power	Lumens	Correlated Color Temp.	Dimension	IP Rating
02-303-002087	300W	42,000lm	4000K	578mm(A)x292mm(B)	IP66
02-303-002088	600W	84,000lm	4000K	647mm(A)x492mm(B)	IP66
02-303-002089	900W	126,000lm	4000K	647mm(A)x627mm(B)	IP66
02-303-002090	1200W	168,000lm	4000K	647mm(A)x812mm(B)	IP66

Selected products only, for other non listed products please get in touch with us