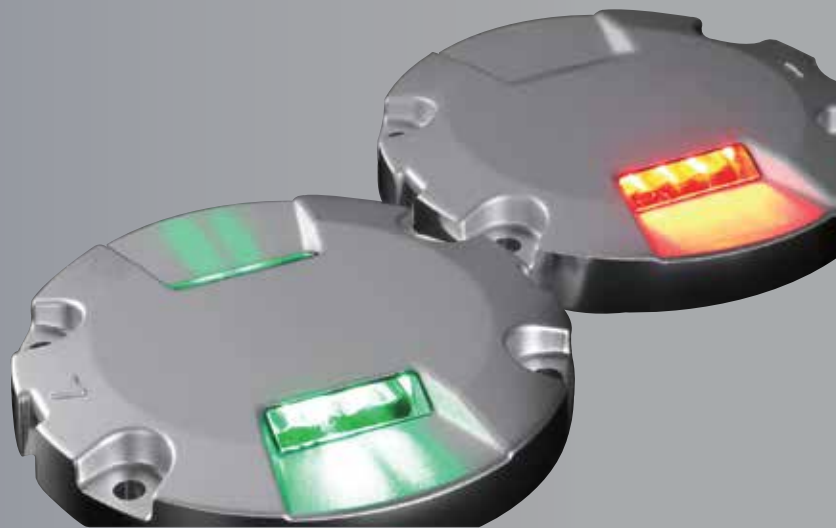


LED AIRFIELD LIGHTING



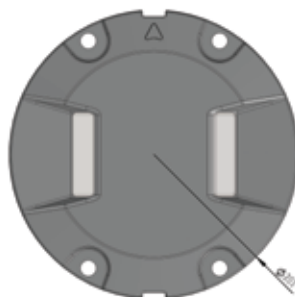
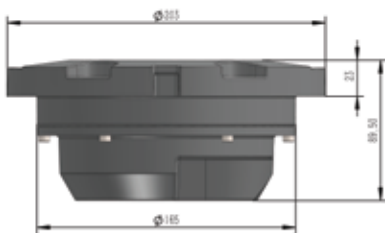
8" LED Inset Light-Series 

TAXIWAY CENTERLINE, STOP BAR, INTERMEDIATE HOLDING POSITION

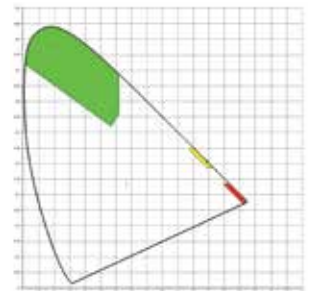
- Extra low propulsion-3.5mm
- Extreme robust design with:
 - Al-drop forged top part
 - Scratch resistant prism
 - Pressure proof adhesive silicon putty
 - Encapsulated and replaceable electronic components
- High efficient and transformer free driver electronics for broad input bandwidth
- Fail Open functionality-selectable between auto-reset and external reset
- Optional with IR Signature-fit to NVG requirements
- Unified Parts Concept-'One part fits all', functions only distinguished by the light engine
- 80,000h serviceable lamp life time (luminous performance >70% of the initial value)

- ICAO Annex 14 Vol 1.7. Edition
- CAAC-AC-123-CA-2015-03
- EASA CS-ADR-DSN
- FAA AC150/5345-46E

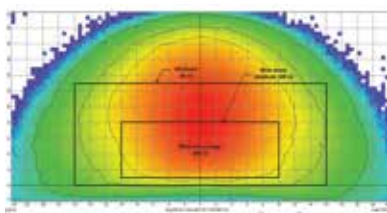
Designs



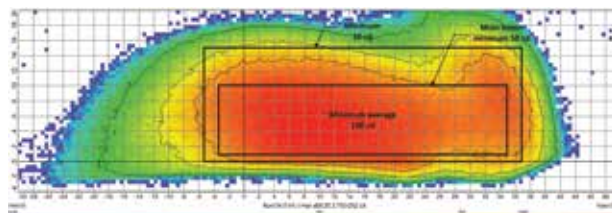
Color Coordinates



Optical



Photometric: Straight



Photometric: Curved

TAXIWAY CENTERLINE, STOP BAR, INTERMEDIATE HOLDING POSITION

- Taxiway Center Line -straight – green/yellow
- Taxiway Center Line -curved – green/yellow
- Taxiway Stop bar – red
- Intermediate Hold Position – yellow

- Uni Directional (One outlet - one connector)
- Bi Directional (Two outlets - one connector)
- Bi Directional - selectable (Two outlets - two connectors)

Technical Data

Mechanics			
Diameter	203mm		
Flange Thickness	19mm		
Height above Surface	3.5mm		
Depth below Flange	60mm		
Weight	2.5kg		
Mounting	4 X M10 X 30		
Static Load resistance	20t		
Dynamic load resistance	40J		
Shear Load resistance	1.7t		
Environmental			
Operating Temperature	-50°C - +55°C (device always active)		
Storage Temperature	-40°C - +85°C		
Solar Radiation	1.5kW/m ²		
Vibration Resistance	IEC60068-2-6		
Protection Class (dust/liquids)	IP67 (IEC69598-1)		
Humidity	0-100%		
Estimated Lifetime (Ld70)	80,000h		
Electrical			
Connection	FAA L823 Style 1 Connector		
Power Input	1.8-6.6A _{eff} AC		
Sinewave CCR	I _{peak-max} =9.47A I _{peak-min} =2.50A		
Thyristor CCR	I _{peak-max} =11.40A ϕ _{min} =45°		
Power factor (nominal)	>0.7		
Power consumption (nominal)	Red/Yellow	Straight	<4.5W
		Curved	<6.0W
	Green	Straight	<3.0W
		Curved	<4.0W
Thermal Protection	80°<LED-PCB Temp<105°C		Linear reduction
	LED-PCB Temp> 105°C		Shutdown & Fail Open
Thermal Degradation Compensation	Luminous Flux @ -40°C-85°C LED-PCB Temp		±5%
EMC Protection	Emission		IEC61000-2
	Immunity		IEC61000-4
Fail Open			
Reaction on	Open Circuit on output		
	Short Circuit on output		
	Over Temperature		
Resetting	Self - resetting type:	Reset after Circuit has been reset for min 10s	
	Latch type:	Reset by applying external trigger	