

LED AIRFIELD LIGHTING



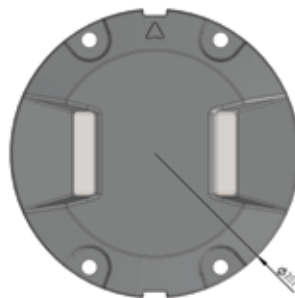
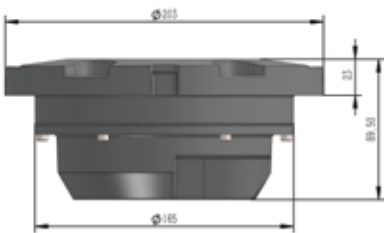
8" LED Inset Light-Series STINGRAY

RUNWAY CENTERLINE, TOUCHDOWN ZONE

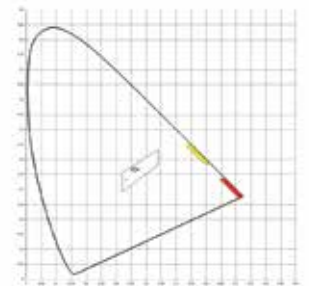
- Extra low propulsion-3.5mm
- Extreme robust design with:
 - Al-drop forged top part
 - Scratch resistant prism
 - Pressure proof adhesive silicon putty
 - Encapsulated and replaceable electronic components
- High efficient and transformer free driver electronics for broad input bandwidth
- Fail Open functionality-selectable between auto-reset and external reset
- Optional with IR Signature-fit to NVG requirements
- Unified Parts Concept-'One part fits all', functions only distinguished by the light engine
- 80,000h serviceable lamp life time (luminous performance >70% of the initial value)

- ICAO Annex 14 Vol 1.7. Edition
- CAAC-AC-123-CA-2015-03
- EASA CS-ADR-DSN
- FAA AC150/5345-46E

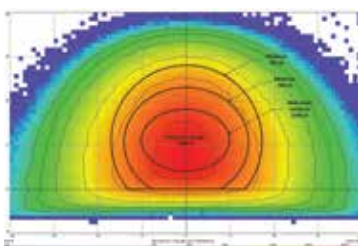
Designs



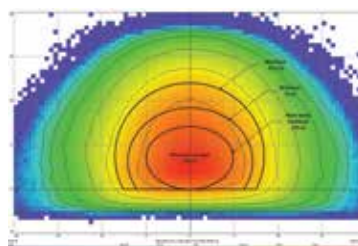
Color Coordinates



Optical



Photometric White



Photometric Red

RUNWAY CENTERLINE, TOUCHDOWN ZONE

- Runway Center Line Light - white/red/yellow
- Touch Down Zone Light - white
- Rapid Exit Taxiway Indicator Light - red
- Uni Directional (One outlet - one connector)
- Bi Directional (Two outlets - one connector)
- Bi Directional - selectable (Two outlets - two connectors)

Technical Data

Mechanics		
Diameter	203mm	
Flange Thickness	19mm	
Height above Surface	3.5mm	
Depth below Flange	60mm	
Weight	2.5kg	
Mounting	4 X M10 X 30	
Static Load resistance	20t	
Dynamic load resistance	40J	
Shear Load resistance	1.7t	
Environmental		
Operating Temperature	-50°C - +55°C (device always active)	
Storage Temperature	-40°C - +85°C	
Solar Radiation	1.5kW/m ²	
Vibration Resistance	IEC60068-2-6	
Protection Class (dust/liquids)	IP67 (IEC69598-1)	
Humidity	0-100%	
Estimated Lifetime (Ld70)	80,000h	
Electrical		
Connection	FAA L823 Style 1 Connector	
Power Input	1.8-6.6A _{eff} AC	
Sinewave CCR	I _{peak-max} =9.47A I _{peak-min} =2.50A	
Thyristor CCR	I _{peak-max} =11.40A ϕ _{min} =45°	
Power factor (nominal)	>0.7	
Power consumption (nominal)	Red	<7.5W
	White	<20.0W
	Yellow	<12.0W
Thermal Protection	80°<LED-PCB Temp<105°C	Linear reduction
	LED-PCB Temp> 105°C	Shutdown & Fail Open
Thermal Degradation Compensation	Luminous Flux @ -40°C-85°C LED-PCB Temp	±5%
EMC Protection	Emission	IEC61000-2
	Immunity	IEC61000-4
Fail Open		
Reaction on		Open Circuit on output
		Short Circuit on output
		Over Temperature
Resetting	Self - resetting type:	Reset after Circuit has been reset for min 10s
	Latch type:	Reset by applying external trigger